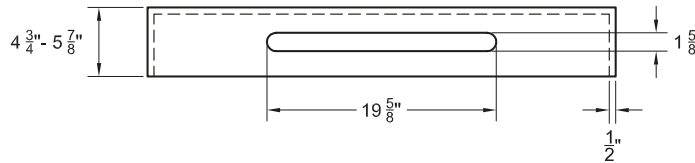
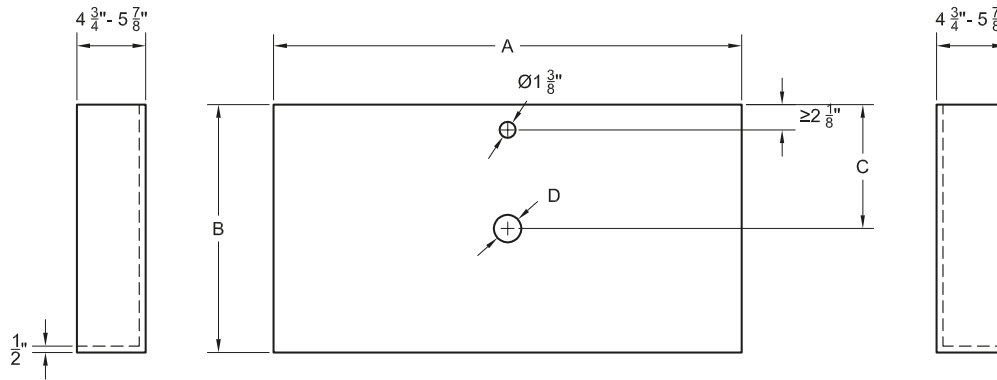


PIZARRA | LISO
A 23 5/8" - 78 3/4"
B 15 3/4" - 23 5/8"



Weight 0,8 lb/in



	No faucet hole	With faucet hole
A	23 5/8" - 78 3/4"	23 5/8" - 78 3/4"
B	15 3/4" - 23 5/8"	15 3/4" - 23 5/8"
C	to be defined by the customer	
D	to be defined by the customer	

STANDARD COLORS



SPECIAL COLORS



RAL



NCS



ACCESSORIES

Backsplash - Sidesplash



Supplied with silicone cartridge in the same color as the sink in standard and special colors. No RAL available.

Thickness 9/16"
Height 3/8" - 13 3/4"

Towel rack

In option



FAUCET HOLE AVAILABLE ON REQUEST
WITH NO EXTRA COST

WALL BRACKETS AND FIXINGS
INCLUDED



Resin+Mineral fillers+Coating



Resistant to hydrolisis



High Coating resistance.



SUPERIOR HARDNESS coating



Anti-bacterial treatment



Consult installation manual.



Cut to size

Sinks are in compliance with the CSA B45.5-22/IAPMO Z124-2022 standard. Mass Code Approved.

Technical specifications are subject to change without notice. Dimensional tolerances +/- 3/16"